

Premium Colour Edition
CorelDRAW[®] 9
Fully Colour-Managed Creation and Output



Feature Guide
International English Edition
September 1999

Copyright © 1999 Corel Corporation. All rights reserved.

All specifications, claims, features, representations and/or comparisons provided are correct to the best knowledge of Corel as of the date of publication, but are subject to change without notice;

INFORMATION IS PROVIDED BY COREL ON AN "AS IS" BASIS, WITHOUT ANY OTHER WARRANTIES OR CONDITIONS, EXPRESS OR IMPLIED, INCLUDING BUT NOT LIMITED TO, WARRANTIES OF MERCHANTABILITY, SATISFACTORY QUALITY, MERCHANTABILITY OR FITNESS FOR A PARTICULAR PURPOSE, OR THOSE ARISING BY LAW, STATUTE, USAGE OF TRADE, COURSE OF DEALING OR OTHERWISE. THE ENTIRE RISK AS TO THE RESULTS OF THE INFORMATION RECEIVED IS ASSUMED BY YOU. WE SHALL HAVE NO LIABILITY TO YOU OR ANY OTHER PERSON OR ENTITY FOR ANY INDIRECT, INCIDENTAL, SPECIAL, OR CONSEQUENTIAL DAMAGES WHATSOEVER, INCLUDING, BUT NOT LIMITED TO, LOSS OF REVENUE OR PROFIT, LOST OR DAMAGED DATA OR OTHER COMMERCIAL OR ECONOMIC LOSS, EVEN IF WE HAVE BEEN ADVISED OF THE POSSIBILITY OF SUCH DAMAGES, OR THEY ARE FORESEEABLE. WE ARE ALSO NOT RESPONSIBLE FOR CLAIMS BY A THIRD PARTY. OUR MAXIMUM AGGREGATE LIABILITY TO YOU AND THAT OF OUR DEALERS AND SUPPLIERS SHALL NOT EXCEED FORTY DOLLARS CANADIAN(\$40.00CDN). SOME STATES/COUNTRIES DO NOT ALLOW THE EXCLUSION OR LIMITATION OF LIABILITY FOR CONSEQUENTIAL OR INCIDENTAL DAMAGES, SO THE ABOVE LIMITATIONS MAY NOT APPLY TO YOU.

Published August 1999

Corel, Corel CAPTURE, CorelDRAW, Corel PHOTO-PAINT, Corel SCRIPT, Corel SCRIPT Editor, CorelTRACE, Corel TEXTURE, WordPerfect, CorelTUTOR, and Docker are trademarks or registered trademarks of Corel Corporation or Corel Corporation Limited.

Adobe, Acrobat, Acrobat Exchange, Adobe Illustrator, Photoshop, and PostScript are trademarks or registered trademarks of Adobe Systems Incorporated.

Bitstream and Font Navigator are trademarks or registered trademarks of Bitstream Inc.

Canto and Cumulus are registered trademark of Canto Software Inc.

Digimarc is a registered trademark of Digimarc Corporation.

Dragon NaturallySpeaking is a trademark of Dragon Systems, Inc.

HEIDELBERG is a registered trademark of HEIDELBERG Druckmaschinen AG, used under licence. All rights reserved and unauthorized use or reproduction is prohibited.

HKS is a registered trademark of HKS Warenzeichenverband E.V.

Human Software Squizz! is a trademark of The Human Software Company Inc.

Java is a trademark of Sun Microsystems, Inc.

Linux is a registered trademark of Linus Torvald.

MetaCreations and Painter are trademarks or registered trademark of MetaCreations Corporation.

Macintosh, Power Macintosh, TrueType, and QuickTime are registered trademarks of Apple Computer, Inc.

Microsoft, Visual Basic, Windows, and Windows NT are trademarks or registered trademarks of Microsoft Corporation.

PANTONE and other Pantone, Inc. trademarks are the property of Pantone, Inc.

Pentium is a registered trademark of Intel Corporation.

UNIX is a registered trademark of The Open Group.

All other fonts, names, and logos are trademarks or registered trademarks of their respective companies.

Table of Contents

Corel Corporate Profile	4
Executive Summary	5
Third-Party Company Profiles	7
Introducing CorelDRAW 9 Premium Colour Edition	8
Overview of New and Enhanced Features in CorelDRAW 9	13
Overview of New and Enhanced Features in Corel PHOTO-PAINT 9.	27
CorelDRAW: Award-Winning Technology	40
Where Do I Get More Information?	44

Corel Corporate Profile

Corel Corporation is an internationally recognized developer of award-winning graphics and business productivity applications. Since its foundation in 1985, Corel has developed products known for excellence and value that follow emerging trends in the software industry. Committed to performance, compatibility, and value, Corel develops products for Windows®, Macintosh®, UNIX®, and Linux® platforms and Java™. Corel is renowned for comprehensive, competitively priced products that have powerful core applications and value-added utilities. Corel develops market-leading products, such as the CorelDRAW® suite of graphics applications and the WordPerfect® Office suite of business tools, while continuing to meet the demands of the corporate, retail, and academic markets.

In 1992, Corel introduced its first graphics suite to coincide with the launch of Microsoft® Windows 3.0. CorelDRAW 3, a competitively priced, all-in-one graphics solution, established the company as a world leader in graphics software. In 1995, CorelDRAW 6 was released as the first major 32-bit application available for Windows 95. Keeping its commitment to cross-platform solutions, Corel released CorelDRAW 8 for Power Macintosh® in 1998. The expanding CorelDRAW product line continues to attract industry recognition, winning more than 300 first-place international awards.

In 1996, Corel broadened its focus when it acquired the renowned WordPerfect family of business applications. Corel carefully re-engineered this world-class software into a market-leading line of powerful productivity applications. In 1997, Corel partnered with Dragon Systems, Inc. to deliver Corel® WordPerfect® Suite 8 with Dragon NaturallySpeaking™, a large vocabulary, general purpose, continuous speech recognition system. Continuing its commitment to performance, compatibility, and value, Corel is focussed on developing office applications that are compatible with other off-the-shelf office suites. In addition, Corel is continually expanding to increase the presence of WordPerfect worldwide.

Corel is headquartered in Ottawa, Canada. Corel's products ship in over 17 languages through a network of more than 160 distributors in 70 countries. Corel maintains several offices throughout Canada and the United States. In addition, Corel has offices in over 18 countries worldwide. Corel's common stock trades on the NASDAQ Stock MarketSM under the symbol CORL and on the Toronto Stock Exchange under the symbol COR.

For more information, visit Corel's Web site at www.corel.com.

Executive Summary

Since its introduction to the graphics industry in 1989, CorelDRAW has become the industry-leading PC illustration program, with 10 million units sold worldwide. In January 1999, CorelDRAW celebrated ten years of graphics excellence, marking the continuation of its commitment to providing leading edge technology to graphics professionals and enthusiasts worldwide.

CorelDRAW® 9 Premium Colour Edition, the newest version of Corel Corporation's flagship graphics application, delivers performance and productivity enhancements, compatibility features, creation tools, and value. The main applications included in the CorelDRAW 9 Premium Colour Edition are CorelDRAW 9 and Corel PHOTO-PAINT® 9. The CorelDRAW 9 Premium Colour Edition also includes HEIDELBERG ColorOpen ICC LE, industry-leading colour profiling software; a monitor luminance device to assist in creating accurate monitor profiles; and an AGFA IT-8 scanner target for use with the HEIDELBERG software to create accurate scanner profiles.

CorelDRAW 9 Premium Colour Edition was developed for the professional graphics designer and desktop publisher who is concerned with achieving a high degree of colour fidelity. To meet the needs of these professionals, Corel has focussed on the following areas: performance and productivity, compatibility and integration, and value.

Performance and Productivity

CorelDRAW 9 Premium Colour Edition provides users with unique creation tools, innovative user interface controls for ease of use, and customization options for streamlining the creation process. CorelDRAW 9 Premium Colour Edition also includes interactive tools that generate live effects, letting designers experiment with their creativity. Maintaining colour accuracy throughout the design process is also important. CorelDRAW 9 Premium Colour Edition provides the tools to ensure high colour fidelity among all computer devices during the creation process.

The professional graphics applications in the CorelDRAW 9 Premium Colour Edition share a print engine that offers high-quality PostScript® output, full PDF functionality, and prepress functionality, including separations and imposition and layout enhancements. CorelDRAW 9 and Corel PHOTO-PAINT 9 are also compatible with extensive imposition and trapping software, such as Imation PressWise and TrapWise, and ScenicSoft Preps.

CorelDRAW 9 Premium Colour Edition includes enhanced HTML export and live hyperlinks, and support for all industry-standard Web graphic formats, including .JPG, .GIF, and .PNG.

Automating common illustration tasks in CorelDRAW and Corel PHOTO-PAINT can increase productivity. Corel SCRIPT™ has been included with several versions of the CorelDRAW suite of applications to let users record scripts for automating functions. CorelDRAW 9 Premium Colour Edition also includes Microsoft® Visual Basic® for Applications 6, an industry-standard scripting language, which allows further customization and automation.

Professional designers can also use industry-leading media asset management tools with Canto® Cumulus® Desktop 4.0 LE. This application allows for easy organization and retrieval of digital assets, and can save users time and increase overall productivity.

Compatibility and Integration

Corel is committed to offering professional designers powerful graphics tools on key platforms to ensure the highest degree of compatibility in a multiplatform environment. Backward compatibility also lets users exchange CorelDRAW 9 files with CorelDRAW 8 for Windows and Power Macintosh, CorelDRAW 7 for Windows, and the CorelDRAW 6 Suite for Power Macintosh.

Compatibility and integration are important because graphic designers typically work in a multi-platform environment. Support for popular file formats, such as Adobe® Photoshop®, Adobe Illustrator®, MetaCreations™ Painter®, and Encapsulated PostScript® (EPS) lets users move files among software applications. Integration with Corel PHOTO-PAINT 9 and support for the Adobe Photoshop file format means that objects and layers are preserved and can be manipulated when opened in CorelDRAW 9. The graphics industry has been traditionally Macintosh-focussed. The Windows and Power Macintosh® versions of CorelDRAW share a virtually identical user interface and a common code base, so users can exchange files seamlessly in multi-platform environments. A Power Macintosh version of CorelDRAW 9 is planned for release early in the year 2000.

Accurate colour management is essential to high-quality output, and CorelDRAW 9 Premium Colour Edition includes support for the International Colour Consortium (ICC) standard colour profiles. Over 250 ICC profiles are included in the suite. Users can embed profiles in a range of graphic file formats for accurate colour representation.

Value

With CorelDRAW 9, users can choose from three different product offerings: CorelDRAW 9 Graphics Suite, for graphics enthusiasts; Corel PHOTO-PAINT 9, for digital imaging professionals or enthusiasts; or CorelDRAW 9 Premium Colour Edition, for design professionals and output centres. All three products include professional digital content, such as clipart, fonts, and high resolution photos.

CorelDRAW 9 users can create a wide range of digital art illustration, including logos, brochures and flyers, signs, technical illustrations, abstract art, and textile designs. A showcase of this artwork can be seen in the annual Corel® World Design Contest. Thousands of entries are submitted from around the world. They are viewed and judged by a panel that decides on the Best of Show design. For examples of submissions and information about the contest, users can visit the Corel Web site at www.corel.com/contests.

Add company blurbs: HEIDELBERG and AGFA.

Third-Party Company Profiles

Heidelberger Druckmaschinen-AG

With about 23,500 employees in over 170 countries, the Heidelberg Group is the world's market leader in printing systems. Heidelberg has developed from a conventional printing press manufacturer to a system vendor for the graphics industry, covering the entire spectrum, from prepress and press to postpress.

The company manufactures sheetfed and Web offset presses, prepress units, and machines for cutting, folding, and binding publications. It has a total of 20 sites in Germany, the USA, Mexico, France, the UK, and the Netherlands.

Worldwide the Group has 250 representations, making it by far the largest sales and service network in the industry. These representations are currently responsible for maintaining approximately 400,000 Heidelberg presses installed worldwide.

Of the seven product governed business units, it is the Prepress Business Unit that Corel is partnering with, where prepress products are developed and produced at Heidelberg's Kiel site. Its 1,400 employees have specialized in hardware and software solutions for digital data processing, including output devices and high-resolution flatbed and drum scanners.

AGFA

The Agfa-Gevaert Group ranks among the world's leading photographic and imaging companies. Agfa manufactures and markets a wide range of technologically advanced photographic and electronic imaging systems, particularly for photography, the prepress sector, and medical imaging processes.

Agfa has its headquarters in Mortsel (Antwerp), Belgium. Some 22,000 people work for Agfa in 35 countries, and the company has 120 agents on all continents. Total 1998 revenues exceeded \$5 billion USD.

Graphic Systems is Agfa's largest business group, with almost 50 per cent of the turnover. The two business units in Graphic Systems offer systems-oriented solutions for all segments of the graphic arts and printing industries. The Prepress Systems business unit deals with imagesetters, platesetters, RIPs, and workflow software, scanners and software, graphics film and paper, processing, proofing, and inkjet systems. The Digital Printing Systems business unit is active in the short-run and variable colour printing market, the fastest growing segment of the printing industry.

The second major business group is Consumer Imager, dealing with DTP scanners, digital cameras, and inkjet consumable films, photographic papers, and equipment for consumers and small office/home (SOHO) users, as well as large-scale photofinishers, minilabs, and specialist laboratories. The third major business group is Technical Imaging Systems, offering photographic and digital systems for medical radiology and computer imaging processes.

Introducing CorelDRAW® 9 Premium Colour Edition

CorelDRAW for Windows was introduced in January 1989, and quickly established a dominant position in the PC graphics market. The application has evolved from a collection of graphics applications with broad market appeal to a targeted professional design tool for graphic designers and desktop publishers.

The CorelDRAW 9 Premium Colour Edition includes a graphics application and supporting utilities, including productivity-enhancing features, interactive tools, and support for Internet publishing.

What's in the Box?

The CorelDRAW 9 Premium Colour Edition includes the following applications and utilities:

Main Applications

CorelDRAW 9: CorelDRAW 9 is a powerful and intuitive vector-illustration and page-layout application that provides a full range of creation tools, effects, and high-quality output features. Since its first release, CorelDRAW has won more than 300 industry awards for ease-of-use, value, and product excellence.

Corel PHOTO-PAINT 9: Corel PHOTO-PAINT 9 is a comprehensive photo-editing, image composition, and painting application. Corel PHOTO-PAINT 9 features image-enhancing filters to improve the quality of scanned images, plus special effects filters that dramatically alter the appearance of images. Users can create artistic effects using natural media brushes that mimic the process of painting on textured paper.

Supporting Applications

HEIDELBERG ColorOpen ICC LE: HEIDELBERG ColorOpen ICC LE is an innovative ICC colour profiling solution for graphics professionals. It features modules that let users generate high-quality, industry-standard ICC profiles for input, display, and output devices. HEIDELBERG ColorOpen ICC LE includes the following components:

- **ViewOpen ICC LE:** Using ViewOpen ICC LE and the Sequel Imaging Gamma monitor luminance sensor, users can generate ICC-compliant monitor profiles. Users must first determine which monitor they are using and adjust the brightness and contrast on the monitor using an on-screen test pattern. Users then hold the Sequel Imaging Gamma monitor luminance sensor against the monitor while a series of colour swatches appear. ViewOpen ICC LE then creates a custom ICC profile for that monitor.
- **ScanOpen ICC LE:** Using ScanOpen ICC LE and AGFA IT-8 Target, users can create high-quality ICC profiles for scanners. When the IT-8 Target is scanned, HEIDELBERG ColorOpen ICC LE compares the scanned image with the colorimetric reference data to create fully ICC-compliant profiles.
- **PrintOpen ICC LE:** Using PrintOpen ICC LE, users can tune preset printer tables to generate ICC profiles. PrintOpen ICC LE also supports a large variety of colorimeters and spectrophotometers to help users create custom ICC profiles for RGB or CMY(K) printers and presses. PrintOpen ICC LE prints test charts containing colour swatches. The test chart is measured using a colorimeter or spectrophotometer (not

included), and the values are recorded by PrintOpen ICC LE. Once this process is complete, PrintOpen ICC LE calculates the measurements and creates an ICC profile.

AGFA IT-8 Target: Using AGFA IT-8 Target and ScanOpen ICC LE, users can create high-quality ICC profiles for scanners. Once the AGFA IT-8 Target is scanned, HEIDELBERG ColorOpen ICC LE compares the scanned image with the colorimetric reference data to create fully ICC compliant profiles. See Figure 1.

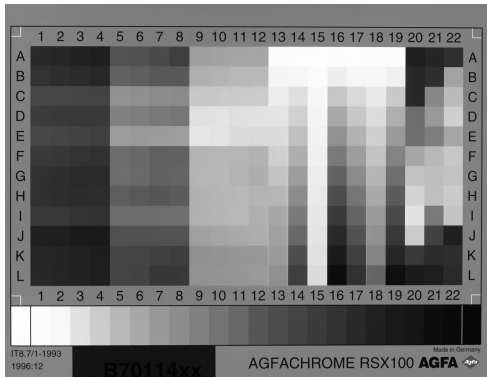


Figure 1



Figure 2

Sequel Imaging Gamma: When used with ViewOpen ICC LE, the Sequel Imaging Gamma creates ICC profiles by measuring the luminance of a monitor. Users hold the sensor on the monitor while a series of colour squares are displayed on screen. The device measures the luminance of these colours. The unique design lets users measure standard monitors and LCD displays without leaving residue or causing damage to the screen. The ICC profiles can be used with any ICC-compliant application to ensure colour accuracy on screen. See Figure 2.

Microsoft Visual Basic for Applications 6:¹ Microsoft Visual Basic for Applications 6 is the leading application in customization technology, used by more than three million developers. It lets developers build custom business solutions by automating and integrating off-the-shelf software applications to meet specific customer needs. Visual Basic integrates rich development capabilities with host applications. Developers who use Visual Basic to extend the CorelDRAW 9 Premium Colour Edition applications can benefit from the familiar Visual Basic programming language, an integrated Rapid Application Development (RAD) environment, and fast runtime performance. Developers can also benefit from Microsoft Forms Package and support for ActiveX controls to create rich user interfaces, provide easy access to the Windows® API and the underlying file system, add connectivity to corporate data, and integrate with other Component Object Model-based software.

1 Microsoft Visual Basic for Applications ships in English only.

Bitstream® Font Navigator™ 3.0: Bitstream Font Navigator 3.0 is a font manager for Windows 95, Windows 98, and Windows NT 4.0, developed by Bitstream Inc., an industry leader in font technology. Bitstream Font Navigator 3.0 offers a quick and easy way to find and install fonts, organize fonts into manageable groups, and view and print font samples.

Canto Cumulus Desktop LE 4.0: Cumulus Desktop LE 4.0 is an award-winning, cross-platform media management system that delivers fast, flexible, and powerful digital asset management. Cumulus Desktop 4.0 organizes media and graphics files into a catalogue which can be indexed so that users can find images, designs, clipart, stock photos, and QuickTime® movies quickly and easily. The application supports over 110 file formats, including Adobe Photoshop and QuarkXPress®.

CorelTRACE™ 9: CorelTRACE 9 is a bitmap-to-vector tracing utility that converts bitmap images to vector images.

Corel TEXTURE™: Corel TEXTURE lets users simulate natural textures, such as clouds, marble, and wood, by combining up to seven user-defined material layers. Users can define the interaction between the layers and apply lighting effects.

Corel CAPTURE™ 9: Corel CAPTURE 9 lets users capture on-screen computer images and record on-screen actions as animation files. Users can capture images of the entire screen, individual windows, toolbars, flyouts, menus, or any rectangular, elliptical, or freehand area the user defines. These images can be used in various applications, such as word processors and presentation applications.

Corel SCRIPT: Corel SCRIPT can be used to develop macros and scripts to automate tasks in the CorelDRAW 9 Premium Colour Edition.

Corel SCRIPT Editor™: Corel SCRIPT Editor is an OLE 2.0-enabled scripting utility. It lets users modify saved recordings or scripts. Users can employ Corel SCRIPT Editor to edit commands, add commands that cannot be recorded, or write scripts from scratch to automate tasks in CorelDRAW. Corel SCRIPT Editor includes features to test, debug, and run script files. It can also be used to create add-on utilities for Corel PHOTO-PAINT 9.

Adobe® Acrobat® Reader 4.0: Adobe Acrobat Reader lets users view, navigate, and print PDFs across multiple platforms. CorelDRAW Graphics Suite users can also save their documents as .PDF files.

Plug-Ins

The CorelDRAW 9 Premium Colour Edition includes Adobe Photoshop-compatible plug-in filters, such as Digimarc® Digital Watermarking and Human Software Squizz!™.

Libraries and Fonts

CorelDRAW 9 includes an extensive collection of image libraries, templates, and fonts to enhance a user's documents, including the following:

- 25,000 clipart images and symbols, with 10,000 new to CorelDRAW 9
- 1,000 TrueType® and Type 1 fonts, with Euro symbols available for each font family

- 1,000 high-resolution photos

Corel PHOTO-PAINT 9 offers an extensive collection of image libraries and fonts to help users enhance their work, including:

- 1,500 photos and 1,200 clipart images and symbols
- 1,500 floating objects
- 800 TrueType fonts

Documentation

CorelTUTOR™: CorelTUTOR is an interactive tool that helps users learn about CorelDRAW 9 and Corel PHOTO-PAINT 9. It familiarizes users with the terms and concepts of basic photo-editing tasks and provides information about many features in the CorelDRAW 9 Premium Colour Edition, from basic tools to advanced effects.

User guide and online Help: The CorelDRAW 9 Premium Colour Edition includes comprehensive documentation, including full-colour reference manuals that provide conceptual and procedural information about CorelDRAW 9 and Corel PHOTO-PAINT 9. Context-sensitive Help (F1), What's This? Help, and detailed online Help provide electronic access to reference and procedural information.

AGFA Publications: CorelDRAW 9 Premium Colour Edition includes two informative AGFA publications in PDF format on CD-ROM:

- **The Secrets of Colour Management:** The Secrets of Colour Management is intended for readers with varying levels of expertise, and addresses complex issues surrounding colour management. It examines what happens to colour at the input, display, and output levels, and shows how to maintain colour fidelity and consistency.
- **From Design to Production in the Digital Age (A Guide to Print Media Production):** From Design to Production in the Digital Age includes information about new production methods, PDF workflows, computer-to-plate imaging, and digital printing.

For more detailed information about AGFA and these AGFA publications, visit the AGFA Web site at www.agfahome.com.

Minimum System Requirements

- Windows 95, Windows 98, or Windows NT 4.0
- Pentium® 133 Processor
- 32 MB RAM (64 MB recommended)
- 100 MB hard disk space for installation
- CD-ROM drive 2X

- SVGA monitor
- mouse or tablet

Overview of New and Enhanced Features in CorelDRAW® 9

CorelDRAW 9 is a vector-based drawing application that lets users create professional artwork, from simple logos to intricate technical illustrations. The CorelDRAW 9 Premium Colour Edition provides professional graphic designers, illustrators, and desktop publishers with a comprehensive collection of tools for vector illustration, page layout, graphic design, and image enhancement. The CorelDRAW 9 Premium Colour Edition includes valuable supporting utilities that deliver the latest in design technology, including productivity-enhancing features, interactive tools, and support for Internet publishing. CorelDRAW 9 has a variety of new and enhanced features to help users create a variety of graphic illustrations.

Colour and Colour Management Features

Multiple on-screen Colour Palettes: CorelDRAW 9 can display multiple Colour Palettes, giving users choice, speed, and flexibility when customizing their workspace. Users can view more than one Colour Palette using the Colour Palette Browser window or the Colour Palettes menu in the Windows menu and enabling the check box beside the palettes they wish to view. Palettes can be unchecked at any time. Users can also set the default palette according to their preference.

New Colour Palettes: New Colour Palettes have been included in The CorelDRAW 9 Premium Colour Edition. They are:

- PANTONE MATCHING SYSTEM® Coated
- PANTONE MATCHING SYSTEM Uncoated
- PANTONE Hexachrome® Coated
- PANTONE Hexachrome Uncoated
- PANTONE® Metallic Colours
- PANTONE Pastel Colours Coated
- PANTONE Pastel Colours Uncoated
- HKS® Colour Palettes

Enhanced Uniform Fill dialog box: The Uniform Fill dialog box has been enhanced to let users click tabs when switching between options in the dialog box. For quick navigation, a Name list box has been added to provide users with a complete list of all colours in the fixed Colour Palettes. Also, the Add To Palette button in the Uniform Fill dialog box lets users add selected colours to open custom palettes. Users also have the option to change colour models in the Colour Harmonies viewer in CorelDRAW 9, and can move each handle on the Colour Wheel individually to create new harmonies.

Choice of internal RGB space: Users can customize the internal RGB space in which colours are managed. This will increase colour consistency between Corel and third-party applications. Several choices of internal RGB profiles are included.

Embedded ICC profiles: ICC profiles may be embedded in various file formats, such as .CPT, .CDR., and .TIF, file formats. Users can also extract colour profiles from images with embedded profiles. This gives users greater control over the colour management process between applications.

Apply ICC profile: By specifying a source ICC profile in CorelDRAW 9, users can convert images that do not contain embedded ICC profiles into the RGB space of the application.

Professional Output Features

The Professional Output features in the CorelDRAW 9 Premium Colour Edition include Publish to PDF, Encapsulated PostScript Export, and Printing Features.

Publish to PDF

The new Publish to PDF features in CorelDRAW 9 are designed to let users create a PDF identical to their original file. This gives users increased publishing flexibility. Options in Publish to PDF include downsampling and compression options, bookmark and hyperlink options, job ticketing capabilities, font embedding, subsetting, and colour management options.

Enhanced text and font options: Users can control how fonts are published in PDF documents. Fonts can be included in the document or exported as curves. Users have the option of subsetting fonts. They can also include base 14 PostScript fonts in case they vary between computers.

Image controls: Several image controls are included in Publish to PDF. Two compression methods are available: Joint Photographic Experts Group (JPEG) and Lemple-Ziv-Welch (LZW) bitmap compression. Options let users downsample colour, grayscale, and monochrome bitmap images independently.

Bookmarks and thumbnails: Users can include bookmarks and thumbnails in PDF documents, which makes it easy for readers to navigate a file. Users can also specify how PDF documents will appear when they are opened in Adobe Acrobat Reader and Acrobat Exchange®.

PDF styles: Users can save their favourite PDF settings as a style. Four default styles are included in CorelDRAW 9: PDF for Prepress, PDF for Web, PDF for Document Distribution, and PDF for Editing. Users can customize settings and include them in the PDF Style list box, eliminating the need to define settings each time they publish to PDF.

Include hyperlinks: Users can include in the PDF file hyperlinks that have been set in the Internet tab in the Object Properties dialog box or in the Internet Objects Toolbar. Hyperlinks created in Publish to PDF can start an Internet browser, go directly to a specified page number, or link to another object within the document.

Job ticketing: Although job ticketing is still an emerging technology in the prepress industry, users can create basic job tickets with CorelDRAW 9. Job tickets inform a printing company about the production details for each job, such as the setup and binding instructions. Users can choose an embedded or external job ticket. Job ticketing in CorelDRAW 9 conforms to the Adobe PJTF specifications.

Colour management options: The colour management options in Publish to PDF let users apply an ICC profile at the time of export. Users can choose either a composite printer profile or a separations printer profile, and have the option of setting specific profiles. Users can also output objects as Red Green Blue (RGB), Cyan Magenta Yellow Black (CMYK), or grayscale. These options let users manage images within PDF documents.

Encapsulated PostScript® Export

The Encapsulated PostScript (EPS) dialog box has been enhanced to give users new EPS exporting options based on parallel PostScript printing features. New options include enhanced colour management options, bitmap image compression, and choice of PostScript compatibility. Bounding box options have been enhanced to increase flexibility. For example, users may now choose to use the object or page bounding box, or add a bleed amount and include crop marks.

Printing Features

Preflight warnings: Preflight warnings give users important feedback and warnings about print jobs. Once the Print engine has analysed a document, a message is displayed on the preflight tab stating any issues related to the printing job, including suggestions about how to avoid problems in the future.

Miniature Print Preview: Miniature Print Preview lets users immediately see the effects of any setting changes. Also, users can verify positioning and page size. Users can still use Full Print Preview for a larger preview with tools to zoom, set up imposition layouts, and move or resize the contents of individual pages.

Enhanced Print To File options : Enhanced Print To File options in the Print dialog box eliminate the need to print an entire document to a single file.

Enhanced Imposition Layout: The Imposition Layout tools combine the Signature Layout and N-up Format capabilities from CorelDRAW 8 into one feature. This is to increase imposition usability and flexibility, and to address specific shortcomings in the imposition features of CorelDRAW 8. The Imposition Layout tools are capable of advanced signature layouts, including customized group sets of signatures, advanced binding options, page rotation, fold marks, and gutters.

Enhanced Print options: New options in the Print dialog box let users turn off overprints specified for objects in the document. Users can also output all bitmap images as RGB, CMYK, or grayscale. Also, a new printing page in the Tools, Options dialog box gives users access to those options previously located in the Special Settings section in the Miscellaneous tab in the Print dialog box.

Print multiple documents: Users can print multiple documents in CorelDRAW 9. All selected documents will be printed as one print job, and users can combine documents on one page using the Imposition Layout tools.

PDF marks: This option adds annotations to PostScript output that are useful when using Adobe Acrobat Distiller. Hyperlinks and bookmarks are maintained when the document is converted to a PostScript file and PDF.

Downsample bitmap images: By downsampling bitmap images, users can improve print speed when proofing a document, or when printing documents that have bitmap images that contain too much information.

Rasterise page: Rasterisation prepares a page for display or printing by turning text and graphics into a bitmap image. Enabling the Rasterise Page check box on the Miscellaneous tab in the Print dialog box lets users resolve printing problems that may occur with non-PostScript printer drivers. Rasterisation can also improve print speed when proofing a document.

Enhanced Duplexing wizard: The enhanced Duplexing wizard helps users set up duplexing on their desktop printer using fewer steps and only one sheet of paper.

PostScript Printer Description (PPD) support: CorelDRAW 9 includes direct parsing support for PostScript Printer Description (PPD) files. Users can now access PPDs for printer setup directly, rather than relying on standard printer drivers supplied with the operating system.

Device-independent PostScript: Users can create multipage, device-independent PostScript files that adhere to the Adobe Document Structuring Convention (DSC). This feature is useful for bringing Corel PostScript files into trapping and imposition programs that do not work well with driver-generated PostScript.

Prepare for Service Bureau wizard: The Prepare For Service Bureau wizard has been enhanced to let users automatically gather all files associated with a document, such as fonts and linked images, to provide a service bureau with everything necessary to open and output the document. Also, users can include a PDF to generate output or to be used as an electronic proof of a document. The Prepare for Service Bureau wizard has a second mode that runs from a profile supplied by the service bureau, automatically setting print options and guiding the user through the process.

Performance and Productivity Features

New scripting commands: New scripting commands have been added to CorelDRAW 9. These automation commands increase the exposure of the application to third-party developers who wish to create CorelDRAW-based solutions for their customers and users.

Link Manager Docker™ window: The new Link Manager Docker window provides an organized list of all external references in a document. The list refers to both Uniform Resource Locators (URLs) and externally linked bitmap images. It also provides users with feedback regarding whether the links are valid, broken, or out of date. This feature is important for users who must deliver files to service bureaus or external contacts, and is useful for Web designers.

Save linked bitmap: Users can save linked or embedded bitmap images in CorelDRAW 9. By right-clicking a linked or embedded bitmap image, users can extract and save it as a new file. This function streamlines workflow when working with bitmap images and helps users recover lost files.

Convert Outline To Object: Convert Outline to Object creates an object with a shape identical to the selected object's outline. This creates a new path that can be used for trapping complex objects.

Enhanced hot key for multiple copies: Users can drop multiple copies of an object into a document by pressing the Spacebar as they move the object around the screen.

User Interface Enhancements

The CorelDRAW 9 Premium Colour Edition now features a streamlined user interface with many easy-to-use enhancements.

Enhanced Pattern Fills : The Interactive Fill tool has been enhanced to make its behaviour consistent with that of other interactive tools in CorelDRAW 9. A user can drag a colour from the Colour Palette to the front or back handles in the dialog box to change the foreground or background colour of a Pattern Fill.

Enhanced drag-and-drop colour functionality: CorelDRAW 9 lets users change the colour of an object layer by dragging a colour from the on-screen Colour Palette to a layer in the Object Manager. Layers can be coloured individually to aid in the organization and layout of a document.

Escape support: Users can cancel all creation and editing operations by pressing the Escape (ESC) key. Escaping reverts a CorelDRAW 9 document to its previous state.

Enhanced Docker windows: Users can substitute a Gripper Bar instead of a Title Bar on an undocked Docker window, removing redundant information and leaving more visible space in the drawing window.

Enhanced Object Manager: The Object Manager contains a view mode that lets users obtain a layer-only view, to manipulate layers and move objects on layers quickly.

Clear Effect button: A Clear Effect button has been added to all Interactive Tool Property Bars. This removes an effect that has been applied to a CorelDRAW 9 image.

Multicolour guidelines: CorelDRAW 9 lets users organize guidelines by using multicolour guidelines. Users can change the colour of a guideline by dragging a colour from the on-screen Colour Palette, or by selecting a guideline and right-clicking a colour in the Colour Palette.

Enhanced Status Bar: The Status Bar in CorelDRAW 9 displays an info line. If the Status Bar is active, it will display helpful hints about the tool with which the user is working.

Enhanced object outline functionality: CorelDRAW 9 lets users highlight objects by changing the outline of a selected object to a dashed line, creating a contrast between the highlighted object and other objects on the page. This is for display only, and does not change the properties of the highlighted object.

Sound feedback: Users can associate sounds with certain events in CorelDRAW 9 by using the standard Windows Sound interface.

Other user interface enhancements in CorelDRAW 9 include:

- Docker windows have been redesigned
- Roll-Ups have been converted to Docker windows
- resolutions in the simplified Convert To Bitmap dialog box are consistent
- Property Bar transactions can be repeated

Precision Features

Curve Smoothness: This feature reduces the number of nodes on an object, simplifying drawings and making them easier to edit and print. Using the node reduction pop-up slider users can choose the desired reduction amount. The object on the screen is updated as the slider moves. Releasing the mouse gives the object the chosen shape.

Interactive Connector tool: The Interactive Connector tool lets users build flow and organizational charts easily. Users can link objects by clicking and dragging. When linked objects are moved, the connector lines are dynamically rebuilt. Connector lines can be bound and unbound to accommodate changes in the diagram, and can be edited to produce user-defined shapes.

Smart Auto-Close: Smart Auto-Close shows users when a selected object will change from an open path to a closed path while being edited with the Shape tool or the Freehand tool. The cursor feedback shows users when the path will close or be joined.

Enhanced rotation functionality: Users can accurately position objects in CorelDRAW 9 documents by maintaining an object's absolute values after it has been rotated. This shows users how much an object has been rotated from its previous position.

Irregular marquee selections: CorelDRAW 9 lets users make irregular marquee selections with the Shape tool, making it easy for users to select nodes in complex line segments. Pressing the ALT key changes the marquee from a rectangle to a freehand marquee.

Enhanced Rectangle tool: The Rectangle tool in CorelDRAW 9 lets users single or multiselect corners of a rectangle to round them.

Enhanced default grid settings: The default grids in CorelDRAW 9 have been redesigned to enhance visibility and functionality. The grid's design now features gray lines rather than dots, and is spaced in 0.25-inch squares, giving it the appearance of graph paper.

Enhanced Zoom Out functionality: The default behaviour of the Zoom tool in CorelDRAW 9 has been enhanced to be consistent with Corel PHOTO-PAINT. Users can now zoom out by right-clicking with the Zoom tool.

Live positioning and sizing: Users can see the position and size values of an object in the Property Bar while creating the object. This lets users create accurately sized and positioned objects.

Preset guidelines: Users can create new documents with preset guidelines. Users can choose between CorelDRAW preset guidelines or define guidelines using Guidelines Setup in the View menu. Guidelines let users create aligned illustrations consistently.

Guideline Property Bar: The new Guideline Property Bar is activated when guidelines are selected. It provides users with feedback for precise positioning of guidelines.

Enhanced Contour functionality: Objects created with the contour feature contain fewer nodes. This reduces the complexity of drawings that use contours, specifically while editing the contour, exporting, and printing.

Enhanced hot key to change node types: Users can change the node type by using a hot key, eliminating the need to use the Property Bar. When a node or nodes are selected, users can change the node type from cusp to curve and from smooth to symmetrical.

Enhanced Shape Tool selections: Users can select all nodes on a selected object, so that all nodes may be simultaneously reduced or modified.

Reverse path: Users can reverse the direction of a selected path, changing the direction of the curve.

Creation Tools

Artistic Media tool: The Artistic Media tool in CorelDRAW 9 contains numerous artistic effects. For example, it lets users apply effects to existing line segments. Some of these effects include Presets, which provide strokes with varying widths and standard styles; Brushes, which stretch CorelDRAW objects along a path; Calligraphic effects, which create calligraphic strokes; and Pressure-sensitive strokes. The Artistic Media tool contains the same smoothing algorithm that is used in the Freehand tool. The Object Sprayer is also a mode of the Artistic Media tool, providing users with a new artistic brush effect. It lets users spray objects or groups of objects along a path. Users can spray both bitmap images and vector objects. This tool contains a Property Bar and Docker window, which let users create lists of objects to spray, place the sprays along an existing path, or choose a predefined path and apply a spray list to it.

Live smoothing: CorelDRAW 9 lets users set an amount of smoothing that can be applied with lines drawn with the Freehand and Artistic Media tools. Users can determine the amount of smoothing by moving the slider in the Tools Property Bar. The next line drawn will be smoothed according to the last setting.

Mesh Fills: Mesh Fills let users create multipoint fills. A creative artistic feature, it lets users create smooth colour transitions in any direction without having to create hundreds of objects with blends and contours. These fills can be printed on any device.

Eyedropper: The Eyedropper tool copies an object's colour, fill, or outline, letting users paste it onto another object. This feature lets users format documents and create styles quickly and easily.

New Eraser nib shape: The Eraser tool in CorelDRAW 9 contains a new square nib, making it easy for users to edit work in a limited space. Also, the creative element of the feature lets users create knock outs, such as a cookie cutter, from an object.

Enhanced line segment functionality: Users can join or add to selected line segments with cursor feedback. Selecting a line segment and then the Freehand tool lets the user select the start or end node of the line segment and extend it by drawing with the Freehand tool.

Perspective Dropshadow: A dropshadow is an object that looks like the shadow of another object. The dropshadow feature has been enhanced to let users create perspective dropshadows. The sides of the shadow converge to a vanishing point, creating three-dimensional depth. Users can change the shadow's direction and distance from an object, its colour and opacity, and the feathering of its edges. Users can create perspective dropshadows by dragging the Dropshadow Interactive Control to the side of an object, or by choosing the option from the Dropshadow Property Bar.

Interactive Contour tool: This new interactive tool lets users create contoured objects and determine the contour type, such as inside, outside, or middle. Users can click an object with the Contour tool, then drag the mouse to create an interactive vector line. Users can also adjust the number of steps by moving the slider on the vector line.

Internet Features

Map text to HTML style: Users who work with CorelDRAW 9 text styles can achieve a clean conversion to HTML by using Cascading Style Sheets™ (CSS) as a layout. The HTML files produced are more accurate and editable, since Corel text styles are translated into CSS, enhancing the export of Web documents.

Enhanced HTML export: Files with duplicated bitmap images will contain only one copy of the bitmap image. All references to the bitmap image point to one file, reducing Web site size and enhancing the export of Web documents.

Automatic Web link update: CorelDRAW 9 lets users update “Corel on the Web” links on a regular basis. The Update command, a new option in the Help menu, gives users the latest list of Internet links from Corel. This list of links includes any program update information, news, and special offers and opportunities from Corel.

Live hyperlinks: Users can preview the target of hyperlinks by right-clicking an object with an associated hyperlink. Choosing Jump To Hyperlink In Browser lets users ensure that hyperlinks point to the correct location.

Web statistics page: When publishing to the Internet, users can automatically generate a statistics page by enabling the Create Statistics Page check box in the Publish to Internet dialog box.

Menu links: Many menus in CorelDRAW 9 contain Corel Online links to guide users to useful information and downloads.

Compatibility and Integration Features

Support for Corel PHOTO-PAINT and Adobe Photoshop file formats: Users can externally link Corel PHOTO-PAINT (.CPT) and Adobe Photoshop (.PSD) raster images. CorelDRAW 9 also supports external linking of .CPT and .PSD files. Users can work with large bitmap images that are externally linked without having to convert them to another file format.

ixla™ Digital Camera Interface: CorelDRAW 9 uses a plug-and-play interface for acquiring images from over 120 digital camera models, including Casio®, Epson®, Fujifilm, Hewlett-Packard®, Konica®, NEC®, Nikon, Olympus, Panasonic®, Ricoh, Sanyo, and Sharp!. Images can be acquired directly from digital cameras. This eliminates the need for a third-party interface to move images from camera to computer before editing. Edited image files can be sent back to digital cameras for storage, sharing, and review.

Bitmap Features

Increased rasterisation limit: CorelDRAW 9 lets users convert to a bitmap image with a resolution value as high as 10,000 dots per inch (dpi). This feature is beneficial to users who create bitmap images for extremely large media, such as billboards or highway signs.

Enhanced Convert To Bitmap dialog box: CorelDRAW 9 has logical and consistent bitmap image conversion resolutions, enhancing the application's consistency with Corel PHOTO-PAINT.

Corel TRACE integration: Users can send a bitmap image from CorelDRAW 9 to Corel TRACE for conversion to vector graphics. This can be accomplished by right-clicking a new context menu item, or by clicking a button on the Bitmap toolbar.

Bitmap crop: This feature lets users crop a bitmap image in CorelDRAW 9. This eliminates the need to crop bitmap images in Corel PHOTO-PAINT, streamlining workflow.

Bitmap Effects

CorelDRAW 9 now contains many of the bitmap effects features used in Corel PHOTO-PAINT. They include the following:

Art Strokes

Charcoal: Charcoal strokes create an image in a charcoal art style, simulating the charcoal technique.

Conté Crayon: Conté crayon strokes create an image in a conté crayon art style, giving the image a soft, aesthetic effect. Users can compose an image using one of the five traditional conté colours, a combination of the five, or all the colours. The conté crayon colours are black, white, sanguine, bistre, and sepia.

Crayon: The Crayon effect scatters the pixels in an image to produce a wax crayon drawing. Users can control the crayon pressure and create outlines around elements in the image.

Cubist: The Cubist effect produces angular strokes that simulate the mood and technique of the Cubist painting style.

Impressionist: The Impressionist effect creates a simulation of standard Impressionist techniques and applies them to an image. Users can choose between a loose stroke style, such as a Monet style, or a fine Dab style, such as a Seurat style.

Palette Knife: The Palette Knife creates images in a Palette Knife painting style. It also adds depth to the paint strokes, giving the image a layered, three-dimensional appearance.

Pastels: The Pastels strokes create an image in a pastel art style that gives it a smeared appearance. Users can choose between Regular or Oil pastels.

Pen & Ink: The Pen & Ink effect gives images the appearance of being created in a pen and ink art style. Users can choose between a Crosshatch or Stippling technique.

Pointillist: Users can create images that simulate the Pointillist art style, which resembles an Impressionist work of art.

Scraperboard: The Scraperboard effect creates images in a scraperboard art style, producing dramatic black-and-white or colour images.

Sketch Pad: The Sketch Pad effect gives images the appearance of a pencil sketch. Users can choose between a range of techniques, from Rough to Fine. Also, users can determine the desired lead type, from 6H to 6B, or choose a coloured pencil with pressure values.

Watercolour: The Watercolour effect creates images in a watercolour painting style. This effect lets users customize the watercolour painting technique, from loose to fine, and from opaque to washed. Users can also determine the amount of paper granulation.

Water Marker: The Water Marker effect gives images the appearance of a water marker art style. Users can choose between a range of techniques, all of which produce vibrant, colourful artwork.

Wave Paper: The Wave Paper effect makes images appear as though they have been painted on wave paper. This produces a daubed painting style on a subtle wave-textured paper.

Colour Adjustment Effects

Deinterlace: The Deinterlace effect reduces even or odd horizontal lines from scanned or interlaced video images.

Desaturate: The Desaturate effect automatically reduces the saturation of each colour to zero, removes the hue component, and converts each colour to its grayscale equivalent. This creates a grayscale image without changing the colour mode.

Level Equalization: Level Equalization lets users adjust shadow, midtone, and highlighted areas by redistributing shades from darkest to lightest, preserving shadow and highlight detail.

Replace Colours: The Replace Colours dialog box replaces one image colour with another colour.

Selective Colour: Users can perform colour modifications with the Selective Colour dialog box. Colour modification is accomplished by increasing and decreasing the percentage of the magenta, yellow, and black pixels that make up each colour in the spectrum.

Tone Curve: The Tone Curve effect performs colour corrections similar to Level Equalization. Users have more precise control over individual values in relation to other values. Users can define their own response curves or choose from a number of presets.

Sample/Target Balance: The Sample/Target Balance dialog box lets users perform colour correction by shifting colour values from a sample colour to a target colour selected from a colour model. Users can apply Sample/Target Balance on three levels: from the low-point (shadow), mid-point (midtone), and high-point (highlights).

3D Filters

Cylinder: The Cylinder filter warps an image around the shape of a cylinder. The Percentage slider lets users set the amount of wrapping. Positive values expand pixels, while negative values compress pixels.

Sphere: The Sphere filter wraps an image around the inside or outside of a sphere. The Percentage slider lets users control the effect. Positive values expand the central pixels towards the image's edge, resulting in a spherical shape. Negative values compress pixels towards the centre of the image to conform the image to a concave sphere.

Blur Filters

Low Pass: The Low Pass filter removes sharp edges and detail from an image, leaving smooth gradients and low-frequency detail. Users can control the percentage and radius of the effect using the sliders.

Jaggy Despeckle: The Jaggy Despeckle filter scatters colour in an image, creating a soft, blurred effect with minimal distortion. Users can control height and width values of the effect.

Directional Smooth: The Directional Smooth filter analyses the value of pixels of similar tonal values to determine the direction in which to apply the greatest amount of smoothing, subtly smoothing edges and surfaces.

Zoom: The Zoom filter lets users create an effect that blurs pixels outward from a centre point on an image. The pixels closest to the centre point are the least blurry. Users can customize the amount of blurring.

Radial Blur: The Radial Blur filter gives an image a blurred effect that radiates from a central point. Users can reposition the centre point, set the intensity of the effect, choose a blur node, and set the quality of the output.

Soften: The Soften filter slightly blurs an image, retaining a high level of detail. Users can apply the Soften filter to the entire image, or to part of it using a lens.

Colour Transform Filters

Bit Planes: The Bit Planes filter is a tool for analysing gradients in images. It reduces the image to basic Red Green Blue (RGB) components and emphasizes tonal changes. The Bit Planes filter is useful for analysing the number of steps in gradients.

Halftone: The Halftone filter gives an image the appearance of a colour halftone, which is an image that has been converted from a continuous tone image to a series of dots of various sizes to represent different tones. Users can adjust the screen angles to produce a wider range of colours.

Contour Filters

Find Edges: The Find Edges filter locates edges in an image and converts them to soft or solid lines. Soft lines create a smooth, blurred outline, while solid lines create a sharp, crisp outline. This filter is useful for high-contrast images, such as images that contain text.

Trace Contour: The Trace Contour filter traces image elements using a 16-colour palette. Users can specify which pixels are highlighted by setting a threshold level. They can also choose an edge type, Lower or Higher. The Lower edge type highlights pixels with a brightness value below the user-defined threshold level. The High edge type highlights the pixels with a brightness value that is higher than the threshold level.

Creative Effects

Crafts: The Crafts effect reconstructs images by sampling main image colours and replacing them with puzzle pieces, gears, marbles, candy, ceramic tiles, or poker chips.

Crystalize: The Crystalize effect transforms images into crystal formations, creating a geometric pixelation of images in polygon forms.

Fabric: The Fabric effect reconstructs images by sampling main image colours and replacing them with needlepoint stitches, quilt patches, rug hooking, strings, ribbons, or a tissue collage.

Frame: The Frame effect applies irregular vignette borders to objects or images, resulting in a specified background colour or transparency. Users can choose from over 150 preset borders, eliminating the need for extensive masking.

Kid's Play: The Kid's Play effect reconstructs images by sampling main colour images and replacing them with Lite Pegs, building blocks, finger paints, or paint by numbers.

Mosaic: The Mosaic effect gives images the appearance of being created with mosaic tiles. Users can also choose to have the tiles form a vignette pattern.

Particles: The Particles effect creates stars or bubbles across an image, resulting in the appearance of star fields, dust, or carbonated soda.

Stained Glass: The Stained Glass effect transforms images into stained glass creations. Users can determine pane and solder size, and can simulate outdoor lighting through a luminosity setting. Also, users can determine the depth of the glass and solder through a 3D Lighting check box in the Stained Glass dialog box.

Weather: The Weather effects add natural elements and atmosphere to images, ranging from a snow flurry to a snowstorm, drizzling rain to a downpour, and misty fog to pea-soup fog.

Distort Filters

Blocks: The Blocks filter breaks an image into scrambled block pieces. Users can set the size of the blocks, the distance between them, and the background colour.

Ripple: The Ripple filter distorts an image with one or more waves. Users can control the strength of the primary wave or add an additional perpendicular wave to increase the distortion.

Tile: The Tile filter reproduces images as a series of tiles on a grid. The Horizontal and Vertical values can be set by the user, and represent the number of images duplicated on each axis. Users can use the Tile effect in combination with flood fills to create backgrounds or preview wallpaper for Web pages.

Whirlpool: The Whirlpool filter applies a fluid, swirling pattern across images. User can choose between any of the preset whirlpool styles in CorelDRAW 9, or they can create custom styles by setting the smear length, spacing, twist, and streak detail of the Whirlpool effect. Custom whirlpool styles can be saved for later use.

Wind: The Wind filter blurs an image in a specific direction, creating the effect of wind blowing across an image. Users can control the strength and direction of the Wind effect. They can also adjust the transparency of the effect by moving the Opacity slider. Higher opacity values produce visible distortion and blurring, while lower opacity values produce a more subtle effect.

Noise Filters

Diffuse: The Diffuse filter spreads out the pixels of an image to fill in blank spaces and remove noise. The effect can appear smooth or blurry, or produce a soft, double-edged look, depending on the level of diffusion.

Dust And Scratch: The Dust And Scratch filter is useful for eliminating dust and scratch faults in an image. It reduces image noise by averaging pixel values, causing adjacent pixels to bleed into each other.

Maximum: The Maximum filter removes noise by adjusting pixel values based on the maximum pixel value of neighbouring pixels. The filter also causes a mild blurring effect if it is applied in large percentages or more than once.

Median: The Median filter is similar to the Dust And Scratch filter, since it removes noise and detail by averaging the colours of adjacent pixels in image. The median filter blurs an image to a greater extent than the Dust And Scratch filter.

Minimum: The Minimum filter darkens an image by adjusting pixel values based on the minimum pixel values of neighbouring pixels. The Radius slider determines the number of neighbouring pixels that are selected and evaluated in the minimum filter process. A large radius value will result in a more profound effect. The Percentage slider controls the amount of darkening applied to an image.

Remove Moiré: The Remove Moiré filter removes undesired wave patterns created by conflicting dot patterns. These patterns occur when halftone screens or two different frequencies are superimposed in an image.

Sharpen Filters

High Pass: The High Pass filter removes low-frequency detail and shading, giving the image a glowing quality. It emphasizes the highlighted and luminous areas of an image. Higher settings remove most of the image detail, leaving only edges visible.

Directional: The Directional filter analyses pixels of similar shades to determine the direction in which to apply the greatest amount of sharpening.

Adaptive Unsharp: The Adaptive Unsharp filter accentuates edge detail by analysing the pixel value of neighbouring pixels, preserving more image detail than other sharpening effects. The results achieved by this filter are subtle and may only be apparent in high-resolution images.

Desktop Publishing and Typography Features

Enhanced Font list: CorelDRAW 9 features an enhanced Font list box, which helps users find fonts quickly and easily. When a user types the name of a font in the list box, the text engine searches for the font name in the list of installed fonts, and displays the font in the list box. The Font list box also includes a Most Recently Used (MRU) font list that will not move as a user scrolls through the list, making the MRU fonts easy to access.

Enhanced Right Mouse Button functionality: This feature lets users drag elements in and out of text, eliminating the need to copy and paste. Users can right-click on selected items and drag them to the desired location inside or outside the text block.

Enhanced Fit Text To Path: The Fit Text To Path mode of the Text tool makes text follow the shape of an object, such as an ellipse. Once the text has been placed on a path, users can choose, through the Property Bar, a Fit Text to Path option. In CorelDRAW 9, when a user selects a graphical element with the Text tool, the text will be placed at the cursor insertion point rather than the beginning of the path.

Enhanced frame editing functionality: This feature lets a user resize the text frame while the text tool remains selected. Paragraph text is easier to manipulate, since users can select the text frame bounding box handles without using the Pick tool.

Enhanced import capabilities: CorelDRAW 9 retains the original text settings in an imported text file, such as column and page size information. This maintains as much of the original document formatting as possible so that users can take less time to reformat an imported document.

Insert symbols as special characters: Users can insert symbols in CorelDRAW 9 documents as a graphical element, or as special characters to be used in text. Users can double-click on a symbol, or drag the symbol onto a page or into a text string. If a text box is selected, the object is inserted into the text box; if no text box is selected, the object is placed on the CorelDRAW 9 page as a graphical element.

Wrap text around text frames: This feature lets paragraph text wrap around other paragraph text frames, making it easier to work with text.

Increased wrap styles for Paragraph text: Wrap styles have been enhanced to include several other wrap styles, such as right, left, above, and below. Users can choose the desired wrap option from a list box under the Wrap icon.

Enhanced kerning functionality: Kerning is the spacing between letters in text. By using the Shape tool, users can change the spacing in Artistic and Paragraph Text between letters, words, or both.

Overview of New and Enhanced Features in Corel PHOTO-PAINT® 9

Colour and Colour Management Features

Multiple on-screen Colour Palettes: Corel PHOTO-PAINT 9 can display multiple Colour Palettes, giving users choice, speed, and flexibility when customizing their workspace. Users can view more than one Colour Palette using the Colour Palette Browser window or the Colour Palettes menu in the Window menu and enabling the check box beside the palettes they wish to view. Users can also set the default palette according to their preference.

New Colour Palettes: New Colour Palettes have been included in Corel PHOTO-PAINT 9. They are:

- PANTONE MATCHING SYSTEM Coated
- PANTONE MATCHING SYSTEM Uncoated
- PANTONE Hexachrome Coated
- PANTONE Hexachrome Uncoated
- PANTONE Metallic Colours
- PANTONE Pastel Colours Coated
- PANTONE Pastel Colours Uncoated
- HKS Colour Palettes

Enhanced Uniform Fill dialog box: The Uniform Fill dialog box has been enhanced to let users click tabs when switching between options in the dialog box. For quick navigation, a Name list box has been added to provide users with a complete list of all colours in the fixed Colour Palettes. Also, the Add To Palette button in the Uniform Fill dialog box lets users add selected colours to open custom palettes. Users also have the option of changing colour models in the Colour Harmonies viewer in Corel PHOTO-PAINT 9, and can move each handle on the Colour Wheel individually to create new harmonies.

Embedded ICC profiles: ICC profiles may be embedded in various file formats, such as .CPT, .EPS, and .TIF file formats. Users can also extract colour profiles from images with embedded profiles. This gives users greater control over the colour management process between applications.

Apply ICC profile: By specifying a source ICC profile, users can convert images that do not contain embedded ICC profiles into the RGB space of the application.

Choice of internal RGB space: Users can customize the internal RGB space in which colours are managed. This will increase colour consistency between Corel and third-party applications. Several choices of internal RGB profiles are included.

Apply, extract, and embed ICC colour profiles: When a bitmap file, such as .CPT or .TIF, contains an embedded ICC colour profile, users have the option to apply the profile to the file when opening it. Colour profiles can also

be extracted from the bitmap file when it is opened and saved to the local colour profile directory for use by the application. CMYK and RGB colour profiles can be saved within supported file types on export.

Professional Output Features

The Professional Output features in Corel PHOTO-PAINT 9 include Publish to PDF, Encapsulated PostScript Export, and Printing Features.

Publish to PDF

The new Publish to PDF features in Corel PHOTO-PAINT 9 are designed to let users create a PDF identical to their original file. This gives users increased publishing flexibility. Options in Publish to PDF include downsampling and compression options, bookmark and hyperlink options, job ticketing capabilities, font embedding, subsetting, and colour management options.

Image controls: Several image controls are included in Publish to PDF. Two compression methods are available: Joint Photographic Experts Group (JPEG) and Lemple-Ziv-Welch (LZW) bitmap compression. Options let users downsample colour, grayscale, and monochrome bitmap images independently.

Bookmarks and thumbnails: Users can include bookmarks and thumbnails in PDF documents, which make it easy for readers to navigate a file. Users can also specify how PDF documents will appear when they are opened in Adobe Acrobat Reader and Acrobat Exchange.

PDF styles: Users can save their favourite PDF settings as a style. Four default styles are included in Corel PHOTO-PAINT 9: PDF for Prepress, PDF for Web, PDF for Document Distribution, and PDF for Editing. Users can customize settings and include them in the PDF Style list box, eliminating the need to define settings each time they publish to PDF.

Include hyperlinks: Users can include in the PDF file hyperlinks that have been set in the Internet tab in the Object Properties dialog box or in the Internet Objects Toolbar. Hyperlinks created in Publish to PDF can start an Internet browser, go directly to a specified page number, or link to another object within the document.

Job ticketing: Although job ticketing is still an emerging technology the prepress industry, users can create basic job tickets with Corel PHOTO-PAINT and CorelDRAW. Job tickets inform a printing company about the production details for each job, such as the setup and binding instructions. Users can choose an embedded or external job ticket. Job ticketing in CorelDRAW 9 conforms to the Adobe PJTF specifications.

Colour management options: The colour management options in Publish to PDF let users apply an ICC profile at the time of export. Users can choose either a composite printer profile or a separations printer profile, and have the option of setting specific profiles. Users can also output objects as Red Green Blue (RGB), Cyan Magenta Yellow Black (CMYK), or grayscale. These options let users manage images within PDF documents.

Printing Features

Preflight warnings: Preflight warnings give users important feedback and warnings about print jobs. Once the Print engine has analysed a document, a message is displayed on the preflight tab stating any issues related to the printing job, including suggestions about how to avoid problems in the future.

Miniature Print Preview: Miniature Print Preview lets users immediately see the effects of any setting changes. Also, users can verify positioning and page size. Users can still use Full Print Preview for a larger preview with tools to zoom, set up imposition layouts, and move or resize the contents of individual pages.

Enhanced Print To File options : Enhanced Print To File options in the Print dialog box eliminate the need to print an entire document to a single file.

Enhanced Imposition Layout: The Imposition Layout tools combine the Signature Layout and N-up Format capabilities from Corel PHOTO-PAINT 8 into one feature. This is to increase imposition usability and flexibility, and to address specific shortcomings in the imposition features of Corel PHOTO-PAINT 8. The Imposition Layout tools are capable of advanced signature layouts, including customized group sets of signatures, advanced binding options, page rotation, fold marks, and gutters.

Enhanced Print options: New options in the Print dialog box let users turn off overprints specified for objects in the document. Users can also output all bitmap images as RGB, CMYK, or grayscale. Also, a new printing page in the Tools, Options dialog box gives users access to those options previously located in the Special Settings section in the Miscellaneous tab in the Print dialog box.

PDF marks: This option adds annotations to PostScript output that are useful when using Adobe Acrobat Distiller. Hyperlinks and bookmarks are maintained when the document is converted to a PostScript file and PDF.

Downsample bitmap images: By downsampling bitmap images, users can improve print speed when proofing a document, or when printing documents that have bitmap images that contain too much information.

Enhanced Duplexing wizard: The enhanced Duplexing wizard helps users set up duplexing on their desktop printer using fewer steps and only one sheet of paper.

PostScript Printer Description (PPD) support: Corel PHOTO-PAINT 9 includes direct parsing support for PostScript Printer Description (PPD) files. Users can now access PPDs for printer setup directly, rather than relying on standard printer drivers supplied with the operating system.

Device-independent PostScript: Users can create multipage, device-independent PostScript files that adhere to the Adobe Document Structuring Convention (DSC). This feature is useful for bringing Corel PostScript files into trapping and imposition programs that do not work well with driver-generated PostScript.

Performance and Productivity Features

New Undo/Redo Docker window: The new Undo/Redo Docker window in Corel PHOTO-PAINT 9 makes it easy for users to go back to an earlier stage in the document's history. Clicking on a command name in the Undo/Redo Docker window reverts the document to an earlier stage. When the number of undo commands

exceeds the computer's allocated memory buffer, they are stored as script commands and can be replayed at any time. Commands and editing steps are easily recognized by both names and icons in the Undo/Redo Docker window. When saved, commands can be replayed or used to build a special automation script using Corel SCRIPT Editor and Visual Basic Editor.

Placed Import from File: Single or multiple selected files can now be imported into a current document by choosing File, Import, Import from File. This command replaces the Paste from File command in Corel PHOTO-PAINT 8. Users can select files from the Import an Image from Disk dialog box. A thumbnail image and crosshair cursor appear in the current document. Clicking in the document will place the file in the centre of the current document. Users can click and drag on the image to resize the original file. Image dimensions can be freely transformed using the ALT key.

Safe file naming: Users can enable the No White Spaces, Special Characters check box in the Save dialog box when saving files for import or export. Empty spaces are replaced by underscores, and other special characters are converted to characters suitable for Web file services.

Enhanced sorting of filter types: Import and Export filter types listed in the Open and Save dialog boxes can be sorted by the following criteria: Extension, Description, Most Recently Used, Bitmap, and Vector. Sort criteria are customized through the Sort Type list box. The readability of the filter list is enhanced by separator lines between groups of filter types, making it easier for users to find filters. Users who wish to import files created in previous versions of Corel PHOTO-PAINT can do so through a .CPT file reference. The file is automatically opened in the Corel PHOTO-PAINT 9 format. Users can export an earlier version of a .CPT file by choosing Export, Export... from the File menu.

Enhanced Bitmap filters: The new BRS (Binary Resource Script) import filter lets users import bitmaps embedded in executable, icon, and cursor type files. The following dialog boxes have been updated with effect style preview windows: BRS (Import), FPX (Import/Export), GIF (Export), JPG (Export), PCD (Import), and WI (Export). Also, the Select Colour dialog box (accessible from the GIF Animation Options dialog box) now includes an effect style preview of the transparent colour.

PIII and MMX Support: Corel PHOTO-PAINT 9 now incorporates several new Raster Image Processing (RIP) functions for both PIII and MMX processors. Various low-level data conversion processes will benefit from these improvements.

Scripts: Corel PHOTO-PAINT 9 includes two new scripts to automate tasks: Contact Sheet wizard and Web Page Image Cutter. The Contact Sheet wizard produces a Web page of thumbnail images that hyperlink to directories containing the original images. The Web Page Image Cutter uses guidelines to cut an image into several pieces, and produces HTML table code to reconstruct an image in a Web browser.

Ease-of-Use Enhancements

Common workspace with CorelDRAW: The PC and Macintosh versions of Corel PHOTO-PAINT and CorelDRAW share a common workspace, ensuring cross-platform and cross-application consistency.

User Interface Enhancements

Objects Docker window enhancements: The following user-interface enhancements have been made to the Objects Docker window:

- A New Lens button has been added.
- The Merge Mode list box and Opacity controls have been moved to the top of the window.
- The Opacity slider has been converted to a pop-up slider.
- Special types of objects, such as lenses, objects with dropshadows, and text objects, are displayed.
- The Lock Transparency check box has been replaced with a button at the bottom of the Docker window.
- The duplication and deletion of objects in the Objects Docker window can be performed by dragging objects to the New Object icon or the trash can icon.
- All buttons, controls, and menu items now contain tool tips for informative feedback.

Text, Dropshadow, and Lens objects are easily identified by icons which appear to the right of each object's name in the list of objects. Object thumbnails in the Objects Docker window now scale in ratio to the system display resolution to maintain legibility on computers capable of a higher resolution. They have also been adjusted in size to offer a broader thumbnail range. The addition of drag and drop support lets the user duplicate and delete existing objects by dragging a thumbnail image or object name to the New Object or Delete Object button at the bottom of the Objects Docker window.

Display caching: Corel PHOTO-PAINT 9 incorporates display caching for fast access of frequently used data for on-screen display. This feature speeds up redraw of Corel PHOTO-PAINT objects when they are moved from one area of a document to another. This new method reduces the time it takes to refresh the display when switching between objects, when multiple objects are being displayed, and when the view is changed by zooming in and out. Previous versions of Corel PHOTO-PAINT replaced objects with a temporary outline, making repositioning objects difficult. In Corel PHOTO-PAINT 9, the view of the object is persistent while repositioning is in progress.

Enhanced Custom Palette functionality: Custom optimized Colour Palettes (.CPL files) containing up to 256 colours can be created from the visible portion of a Corel PHOTO-PAINT document, from selected objects, or from the entire document. When the document contains a mask, the Colour Palette is based on colours contained within the editable portion, or selection, defined by the mask. The Create Custom Palette command opens the Palette Editor dialog box, where users can save custom Colour Palettes. This function is especially valuable when creating colour-reduced images for use on the Internet and for creating unique selections of colours for painting.

Enhanced Application Interface options: Application interface option settings in Corel PHOTO-PAINT 9 have been reorganized to streamline workflow in the dialog boxes and to support the addition of new setting options. New setting options are available for: Warnings and Pop-ups, Path Colour, Crop Tint, Transparency Grid Size, Object Tip Preferences, Searchable Tree Controls, Document Guidelines, Grid and Ruler, and Colour Management.

Hide Windows command: This new command, located in the Windows menu, lets users turn all on-screen user interfaces on and off. Users can quickly hide all the application's interface controls for an unobstructed view of the document.

Enhanced Property Bars: All Roll-Ups have been eliminated from Corel PHOTO-PAINT 9 in favour of streamlined Property Bars. All settings are now applied through the Property Bar, with the exception of brush-based tools, which use the Artistic Media and Brush settings Docker windows.

New toolbars: New toolbars in Corel PHOTO-PAINT 9 include the Symmetry painting mode toolbar, and Workspace and Internet Objects toolbars. The Internet Objects toolbar will replace the Tag WWW URL dialog box. All toolbars can be docked vertically.

Enhanced Document Title Bar: In Corel PHOTO-PAINT 9, file information appears in the Title Bar of a document in the application interface, regardless of whether the document is active. Also, the Title Bar displays the current zoom size of a document.

Enhanced Create A New Image dialog box: The resolution setting spin control has been replaced by a list box. Users can choose from a selection of preset resolution values or enter custom values.

Colour tinting: Users can open a window containing tints of a swatch colour by clicking and holding the mouse button on the on-screen Colour Palette. Clicking on a colour in this swatch changes the current paint colour. This feature is consistent with CorelDRAW 9, and lets users define and use subtle colour changes when painting or editing an image. Also, users can now ALT-click on an on-screen colour palette to tint the current fill or paper colour by 10 per cent of the selected colour. This feature is also consistent with CorelDRAW 9 and allows for quick access to a wide range of colour tints.

Enhanced Paper Size dialog box: The Paper Size dialog box has been redesigned to include a Reset button and a larger preview area. The dialog box also includes an interactive preview for the original page position.

Cursor feedback in the Clone tool: The brush shape outline of the Clone tool has been added to the Source Point cursor, giving users enhanced on-screen feedback when editing a document.

Compatibility and Integration

ixla Digital Camera Interface: Corel PHOTO-PAINT 9 uses a plug-and-play interface for acquiring images from over 120 digital camera models, including Casio, Epson, Fujifilm, Hewlett-Packard, Konica, NEC, Nikon, Olympus, Panasonic, Ricoh, Sanyo, and Sharp!. Images can be acquired directly from digital cameras. This eliminates the need for a third-party interface to move images from camera to computer before editing. Edited image files can be sent back to digital cameras for storage, sharing, and review.

Compatibility with Adobe Photoshop .PSD and MetaCreations Painter .RIFF file formats: PSD and RIFF files can be opened in Corel PHOTO-PAINT 9. The import of compressed file data, layers, selections, and alpha channels is supported. However, effect layers, some adjustment effects, and vectors must be converted to bitmap images or they will be neglected when the file is opened.

Support for QuickTime® 3.0: Corel PHOTO-PAINT 9 supports the import of QuickTime movie files in the .MOV file format. It also supports the export of animation to the single track .MOV file format. All QuickTime compression methods and codes are also supported.

Support for QuickTime 3.0 VR: Users can create, open, edit, and save single or multiple-node QuickTime VR Panoramas and Objects. Hyperlinking hotspots can be added, removed or modified. Low-resolution versions of panorama nodes can be created, opened, edited, and saved to optimize viewing on the Internet. Node comments can be added and file compression defined on export.

Image Enhancement Features

Convert images to Duotone: Users can change the mode of an image to Duotone without first converting it to grayscale.

Enhanced Dodge/Burn effect tool: The Dodge/Burn effect tool now uses a curve-based method to perform exposure changes to specific tonal regions of an image, including highlights, midtones, and shadows, resulting in a higher-quality image.

Dropshadow Tool and Dropshadow Objects: In Corel PHOTO-PAINT 8, dropshadows appeared as objects in the Objects Docker window, grouped with the object or objects from which they were created. In Corel PHOTO-PAINT 9, dropshadows are created for an active object using the new Dropshadow tool. Dropshadows can also be applied simultaneously to multiple selected objects. Dropshadows exist as properties of objects, and no longer appear as separate objects in the Objects Docker window. The dropshadows are represented by an icon beside the thumbnail of the associated object. By right-clicking on the name of the dropshadow object in the Object Docker window, users can remove the shadow from the object by choosing Delete from the menu. Users will be able to split the shadow from the object and produce a new object by choosing the Split command. Users can also permanently merge the shadow with the original object by choosing the Combine command. All tool settings now appear on the Interactive Dropshadow Property Bar when the Dropshadow tool is selected from the Toolbox.

Internet Features

Preview GIF transparency: When saving a file to the .GIF format, a colour within the image can be selected to appear transparent when the image is used in a Web page. In Corel PHOTO-PAINT 9, the resulting transparency can be viewed in the GIF Export dialog box.

Automatic Web link update: Corel PHOTO-PAINT 9 lets users update “Corel on the Web” links on a regular basis. The Update command is a new option in the Help menu and gives users the latest list of Internet links from Corel. This list of links includes program update information, news, and special offers and opportunities from Corel.

Masking Features

Enhanced Mask previews: Corel PHOTO-PAINT 9 lets users preview the result of applying a Mask menu Shape command to an image by showing a ruby overlay on screen. The Shape commands include Feather, Border, Smooth, Threshold, Expand, and Reduce. This streamlines editing, since users can see the result of applying masks and adjust it before committing to the result.

Multimedia Features

Movie Docker window: The Movie Docker window is a visual movie navigator that includes thumbnail representations of each movie and animation frame, play controls, frame rate timing values, and interactive overlay control for animation rotoscoping procedures.

Document-integrated movie frame navigator: This feature is an upgrade to the Page Tab style control in previous versions of Corel PHOTO-PAINT. A pop-up slider on the current frame indicator lets users navigate to another frame in the movie file.

Precision Features

Enhanced Path tool: The Path tool has been enhanced to be consistent with the Bézier tool in CorelDRAW. It includes interactive cursor changes and enhanced node placement precision. By pressing the comma key, users can switch between the Node Edit, Bézier Path, and Freehand Path modes of the Path tool. The Path tool also has a freehand drawing mode that lets users draw natural lines and curves. Users can marquee and freehand select nodes, as they can in CorelDRAW. When the tool is in node-editing mode, selected nodes can be stretched, scaled, rotated, and skewed. A nodes can be removed from the current path by double-clicking on it. Double-clicking on a path adds nodes to the path. Users can also click on a path to add temporary nodes to the path. The colour used to represent paths on-screen can be changed in the Options dialog box.

Paths Docker window: The new Paths Docker window displays all paths associated with the active document. A Duplicate Path command has been included in the Docker window, and a Show/Hide Path command has been added to the right mouse button menu. Users can import .PTH files from earlier versions of Corel PHOTO-PAINT and other popular file formats, such as .CDR (CorelDRAW) and .AI (Adobe Illustrator). Paths can be exported as .CMX and .AI file formats suitable for use with CorelDRAW. In Corel PHOTO-PAINT, paths are now stored within the .CPT file, not as an external .PTH file. Corel PHOTO-PAINT paths can be used to define clipping paths when printing from Corel PHOTO-PAINT and exporting the image to the .EPS format. Clipping Paths for EPS files are now set in the Paths Docker window through a pop-up menu. Users can also right-click on the path name and choose the Set as Clipping Path Command. Users should note that when clipping paths are set, they will be used as the image boundary when printing from Corel PHOTO-PAINT 9.

Enhanced Zoom tool: The Zoom tool in Corel PHOTO-PAINT 9 includes more preset levels of zoom for finer precision. The Property Bar has been reorganized for consistency with CorelDRAW.

Enhanced Deskew Crop tool: The Deskew Crop tool in Corel PHOTO-PAINT 9 includes a Crop Overlay option that tints or dims the area outside the cropping boundary. Users can interactively expand the paper size with the Crop tool by going beyond the perimeter of the document or limit the crop to an area within image boundaries. Also, cropping resolution presets and custom value setting have been added so that the image can be resampled while it is being cropped.

New Text tool: Corel PHOTO-PAINT 9 now includes a Text tool, which gives the application most of the artistic text setting features found in CorelDRAW. Extensive new format options are available in the Format Text dialog box. When text is selected for editing, the outline colour can be edited by right-clicking on a colour swatch in the on-screen Colour Palette. The text object can contain up to 32,000 characters and multiple fonts. Formatting options for specifying font type, weight, size, spacing, and other character properties are available in the Text tool Property Bar.

Object Editing Features

Blend ranges: Corel PHOTO-PAINT 9 lets the user specify how a contiguous range of pixel values blend with underlying data. Graphic controls in the Object Properties dialog box are adjusted to define, by composite grayscale value, which portions of the active object will combine with the composite, underlying data for display purposes. The appearance of these object blends in Corel PHOTO-PAINT 9 can be modified by applying a merge mode to the active object. Object blends can be restricted to a specific image channel, according to the mode of the image data. This feature allows .PSD format files to be imported into Corel PHOTO-PAINT 9 with layer blend ranges intact.

Create lenses from masks: Lenses include 23 non-destructive visual effects that can be applied to an image in Corel PHOTO-PAINT 9. A lens exists as an independent object and can be created from a mask. Lens options now appear in an alphabetical list box with a check box that indicates whether the lens should be created from a current mask. Lens objects have an identifying icon in the Objects Docker window.

Object digging: Corel PHOTO-PAINT 9 supports object digging. Object digging adjusts the focus of the active object in a group. With the Object Picker tool selected, users can press the ALT key and click on the document to change the selected object to the next object in the layer and so on. When objects are grouped, users can press the ALT and CTRL keys to restrict the digging behaviour to the group.

Artistic Brushes and Painting Features

Artistic Media painting and brush settings: Corel PHOTO-PAINT 9 includes a new interface for the Paint, Effect, Clone, and Image Sprayer tools. All of the brush setting controls, including Pen Settings, now exist on the single-page Brush Settings Docker window, giving users access to controls while painting. Soft edge transparency, rotation, and flatness controls are integrated into a new Nib Dial control that helps users visualize the shape of the brush tip. Keyboard arrow keys can be used in combination with the mouse to simulate the pressure result of painting with a pressure-sensitive pen and tablet device. The accuracy of brush strokes in Corel PHOTO-PAINT 9 has also been enhanced. The application includes a mechanism for increasing accuracy and smoothness of brush strokes in Windows NT 4.0 (with Service Pack 3 or later) and

Windows 98. This mechanism results in more accurate position information when painted strokes are applied to an image.

Artistic Media Docker window: The Artistic Media Docker window displays brush strokes for each brush preset. Recently used brushes appear in a separate section of the window so users can easily locate a favourite brush. Selected brushes are kept on-hand for reuse during a painting session. A new group of brush presets can be created from the Most Recently Used (MRU) list. Also, the speed of redraw and smoothness of painting for each brush type has been enhanced. For enhanced precision while painting, a crossbar has been added to the centre of the brush shape cursor, and a fast cursor redraw mechanism has been implemented for on-screen cursor resizing.

New Image Sprayer Create Spraylist dialog box: This new dialog box lets users define which images contained in a spraylist will appear when painting, the order of their appearance, and repeating images.

Pressure-sensitive device support: Pressure-sensitive device setting options, which are typically used with a pen and tablet device combination, have been amalgamated with other brush-tool-specific properties contained within the Brush Settings Docker window. Pen settings are saved when a brush preset is created.

Mouse painting: Users can use the mouse as a pressure-sensitive device. Pen Setting options in the Brush Settings Docker window now function on the mouse drag when the up and down keyboard arrow keys are depressed. The speed at which the stroke is altered depends upon the key repeat rate speed and the Pen Settings values.

On-screen Image Sprayer list resizing: Users can now use the SHIFT key to resize the current image list when using the Image Sprayer tool, as they can with the other brush tools.

Enhanced orbit values: The radius value in the Orbits dialog box has been changed to reflect a percentage value of the nib diameter. When a nib is resized, the radius is scaled in proportion to the new size.

Artistic Effects

The controls of all dialog boxes in the Image and Effects menus have been redesigned to minimize the size of the dialog boxes and maximize efficiency. The Effects menu navigation button, the on-screen/in-dialog box preview button, and the single/dual preview button have been moved to the Title Bar of the Effects dialog box. New slider controls provide clearer graphical indication of the marker position in the sliders' range. Also, when an Effects dialog box is open, pressing F2 will temporarily minimize the dialog box and move it to the top centre of the display area. A new progress metre for all effects is included in each dialog box.

Art Strokes

Charcoal: Charcoal strokes create an image in a charcoal art style, simulating the charcoal technique.

Conté Crayon: Conté crayon strokes create an image in a conté crayon art style, giving the image a soft, aesthetic effect. Users can compose an image using one of the five traditional conté colours, a combination of the five, or all the colours. The conté crayon colours are black, white, sanguine, bistre, and sepia.

Crayon: The Crayon effect scatters the pixels in an image to produce a wax crayon drawing. Users can control the crayon pressure and create outlines around elements in the image.

Cubist: The Cubist effect produces angular strokes that simulate the mood and technique of the Cubist painting style.

Dabble: Dabble strokes create an image in a loose dabble painting style that gives them a messy look. This effect lets users apply default Dabs, Sprayed Strokes, and Round Strokes, as well as Cotton Ball, Ice Cube, and Sponge Painting effects to an image.

Impressionist: The Impressionist effect creates a simulation of standard Impressionist techniques and applies them to an image. Users can choose between a loose stroke style, such as a Monet style, or a fine Dab style, such as a Seurat style.

Palette Knife: The Palette Knife creates images in a Palette Knife painting style. It also adds depth to the paint strokes, giving the image a layered, three-dimensional appearance.

Pastels: The Pastels strokes create an image in a pastel art style that gives it a smeared appearance. Users can choose between Regular or Oil pastels.

Pen & Ink: The Pen & Ink effect gives images the appearance of being created in a pen and ink art style. Users can choose between a Crosshatch or Stippling technique.

Pointillist: Users can create images that simulate the Pointillist art style, which resembles an Impressionist work of art.

Scraperboard: The Scraperboard effect creates images in a scraperboard art style, producing dramatic black-and-white or colour images.

Sketch Pad: The Sketch Pad effect gives images the appearance of a pencil sketch. Users can choose between a range of techniques, from Rough to Fine. Also, users can determine the desired lead type, from 6H to 6B, or choose a coloured pencil with pressure values.

Watercolor: The Watercolor effect creates images in a watercolour painting style. This effect lets users customize the watercolour painting technique, from loose to fine, and from opaque to washed. Users can also determine the amount of paper granulation.

Water Marker: The Water Marker effect gives images the appearance of a water marker art style. Users can choose between a range of techniques, all of which produce vibrant, colourful artwork.

Wave Paper: The Wave Paper effect makes images appear as though they have been painted on wave paper. This produces a daubed painting style on a subtle wave-textured paper.

Creative

The Creative effects in Corel PHOTO-PAINT 9 extend the range of visual effects.

Crafts: This effect reconstructs images by sampling main image colours and replacing them with puzzle pieces, gears, marbles, candy, ceramic tiles, or poker chips.

Crystalize: The Crystalize effect transforms images into crystal formations, creating a geometric pixelation of images in polygon forms.

Fabric: The Fabric effect reconstructs images by sampling main image colours and replacing them with needlepoint stitches, quilt patches, rug hooking, strings, ribbons, or a tissue collage.

Frame: The Frame effect applies irregular vignette borders to objects or images, resulting in a specified background colour or transparency. Users can choose from over 150 preset borders, eliminating the need for extensive masking.

Kid's Play: The Kid's Play effect reconstructs images by sampling main colour images and replacing them with Lite Pegs, building blocks, finger paints, or paint by numbers.

Mosaic: The Mosaic effect gives images the appearance of being created with mosaic tiles. Users can also choose to have the tiles form a vignette pattern.

Particles: The Particles effect creates stars or bubbles across an image, resulting in the appearance of star fields, dust, or carbonated soda.

Stained Glass: The Stained Glass effect transforms images into stained glass creations. Users can determine pane and solder size, and can simulate outdoor lighting through a luminosity setting. Also, users can determine the depth of the glass and solder through a 3D Lighting check box in the Stained Glass dialog box.

Vortex: The Vortex effect paints a spinning vortex of brush strokes on images, resulting in complex designs of colour and motion.

Weather: The Weather effects add natural elements and atmosphere to images, ranging from a snow flurry to a snowstorm, drizzling rain to a downpour, and misty fog to pea-soup fog.

Custom

Bump Map: Users can apply a three-dimensional Bump Map to images to create realistic textures and patterns. Corel PHOTO-PAINT 9 contains 24 preset Bump Maps. Choices include Aztec Tiles, Bricks, Burlap, Cobblestone, Corduroy, Cracks, Crumpled Paper, Dimples, Dunes, Ice, Jigsaw Puzzle, Painted Brick, Paper Maché, Rings, Ripples, Siding, Steel Plate, Swirls, Tablecloth, Thatch, Tiles, Twigs, Veins, and Vertical Concrete. Users can also use their own images as a Bump Map to produce new textures.

Texture

Brick Wall: The Brick Wall effect gives images the appearance of being created on a brick wall. Users can adjust brick size, grout width, and roughness.

Bubbles: The Bubbles effect places realistically lit bubbles across an image. The bubbles merge as they gather, resulting in the appearance of soap suds. Light refraction can be also be added.

Cobblestone: The Cobblestone effect makes images appear as though they were created on cobblestone. Users can choose between straight-edged or warped stones.

Elephant Skin: The Elephant Skin effect applies elephant-like wrinkles to an image. Users can adjust the Age Metre to range from wrinkly to ancient.

Etching: The Etching effect creates an image that appears to have been etched on a metal plate.

Plastic: The Plastic effect gives images the appearance of being made from plastic. These images also appear to be three-dimensional and wet.

Plaster Wall: The Plaster Wall effect paints images onto a plaster wall surface, giving images a rough pattern.

Relief Sculpture: The Relief Sculpture effect produces carved sculptures from images, adding realistic lighting and shading.

Screen Door: The Screen Door effects makes images look as though they are being viewed through a screen door. Users can choose between black-and-white or colour screens.

Stone: The Stone effect applies a stone texture surface. Corel PHOTO-PAINT 9 includes several preset stone textures, such as Concrete, Asphalt, Stucco, Sandstone, and Erosion.

Underpainting: The Underpainting effect gives images a realistic painted look, showing canvas texture.

CorelDRAW®: Award-Winning Technology

Since its introduction to the software industry, CorelDRAW has established a significant position in the graphics software market, and has continued to be a leader in graphics technology. The technology behind the product has won awards and distinctions worldwide.

CorelDRAW™ 8:

- First in DRAW category, *PC World New Zealand*, New Zealand, December 1998/January 1999
- Reader's Choice, 1998 Product of the Year, *CHIP*, Poland, 1998
- Editor's Choice, *PC Magazine Czech Edition*, Czech Republic, November 1998
- Editor's Choice, Professional Graphics/Illustration, *PC Magazine Anz*, Australia, November 1998
- Top 100 Products List, *Computer Shopper Magazine*, United States, November 1998
- Reader's Choice, *CHIP*, Germany, November 1998
- Editor's Choice Award, Professional Graphics Illustration, *PC Magazine China*, China, November 1998
- Editor's Choice Award, Best Professional Graphics, *PC Magazine Australia*, Australia, November 1998
- Reader's Choice, Best Non-Business Application & Best Business Application, *Computer Magazine*, Belgium, October 1998
- Editor's Choice, *Personal Computer World*, United Kingdom, October 1998
- On the "A" List, Best Business Graphics, *PC Computing Taiwan*, Taiwan, October 1998
- 1998 Best Graphics Design Package, *Windows User Middle East*, Middle East, October 1998
- 1998 Award of Excellence, *DIT (PC Magazine)*, Middle East, October 1998
- Editor's Choice Award, *PC Magazine*, United States, September 1998
- Volba 98 Award, *Vogel Publishing*, Czech Republic, September 1998
- User's Choice Award, Best Graphics Software, *PC Quest*, India, September 1998
- Buy It, Graphics Packages on Test, *ComputerActive*, United Kingdom, September 1998
- 1998 World Class Award, Drawing Software, *PC World*, United States, July 1998
- Editor's Choice Award, *PC World*, India, July 1998
- Best Graphics Software, *PC World China Weekly*, China, July 1998
- Best Graphics Software, *PC World*, Portugal, July 1998
- Best Graphics Software, *PC World Malaysia*, Malaysia, July 1998

- PC Format Gold Award, *PC Format*, United Kingdom, June 1998
- Recommended Product Award, Rated 9 out of 10, *PC Advisor*, United Kingdom, June 1998
- Best in Test, *Mikrodatron*, Sweden, June 1998
- Best of Byte Award in the Best Foreign Software category, *Byte Magazine*, Turkey, May 1998
- Favourite Illustration Software, Editor's Choice, *Singtao PC Market*, Hong Kong, April 1998
- Top Product, *PC World*, Czech Republic, April 1998
- Recommended Product Award, *PC@uthority*, Australia, April 1998
- Rated 4.5 out of 5 stars, *Publish Magazine*, April 1998
- Orchid Award, *Byte Magazine*, April 1998
- User's Choice for Drawing Software, *Byte Magazine*, April 1998
- Product of the Year, *PC Magazine*, Germany, April 1998
- Pournelle Chaos Manor User's Choice Awards in the G category, *Byte Magazine*, April 1998
- Voted ETA Editor's Choice, *ETA Online Review*, United Kingdom, March 1998
- Rated 4.5 out of 5 stars, *DTP Journal*, March 1998
- Voted Best Value/Quality, *ComputerBILD*, Germany, March 1998
- Value Award, *PC Plus*, United Kingdom, February 1998
- Best DTP, Illustration and Bitmap Editing, *Computer Totaal Troffee*, Netherlands, January 1998
- 1st Place Product 1997, Best DTP, Photo-Editing, and Illustration, *Computer Totaal*, Netherlands, January/February 1998

CorelDRAW 8™ for Power Macintosh®

- 4.5 stars, *MacHome Journal*, United States, January 1999
- Classic Award, *MacFormat*, United Kingdom, December 1998
- MacToday, "4.5 out of 5," *MacToday*, United States, November-December 1998
- 4 out of 5, *Univers MacWorld*, France, November 1998
- Best Buy, *MacDirectory*, United States, Fall 1998
- 3.5 stars, *eMediaWeekly*, United States, August 1998
- 1998 Impact Award, *Publish Magazine*, United States, July 1998

CorelDRAW™ 7:

- A-List Recommended Product, Integrated Drawing Software, *PC Computing Taiwan*, Taiwan, July 1998
- 1997 Product of the Year in the Graphics Software Category, *PC World Italia*, Italy, March 1998
- 1998 Most Valuable Product Winner for Business and Graphics Software, *PC Computing Taiwan*, Taiwan, January 1998
- Reader's Choice, *Computer Currents Magazine*, United States, December 1997
- Best Graphics Software, Reader's Poll, *Info Exame*, Brazil, December 1997
- Product of the Year 1997, CorelDRAW™ 7 Polish, *Lupus Publishing*, Poland, December 1997
- Top 50 Creative PC Products, Editor's Choice, *PC Graphics and Video*, United States, December 1997
- Best Buy Award, *What PC?*, United Kingdom, November 1997
- Best Seller Award, *What PC?*, United Kingdom, November 1997
- Recommended Product, Editor's Choice, *PC Shopping*, Germany, October 1997
- Value Award, *PC Plus*, United Kingdom, October 1997
- 5 out of 6 Stars, *Computer Buyer*, United Kingdom, October 1997
- Product of the Year Award 1996, Graphic Design and Illustration Category, *PC Magazine*, Spain, January 1997
- Most Valuable Product, Business Graphics Category, *PC Computing*, United States, 1997
- User's Choice Award - Graphics, *PC Quest*, India, 1997
- Graphics Application of the Year, CorelDRAW™ 7 Polish, *PC World Komputer*, Poland, 1997
- Product of the Year Award in the Desktop Publishing and Graphics Category, *Windows Guide Schweiz*, Switzerland, 1996
- Top Illustration Application of the Year, *GCN*, United States, December 1996
- 1996 Gold Medal winner, *Your Computer*, Australia, 1996

CorelDRAW™ 6:

- Voted Reader's Choice 1998 with 87 per cent of the vote, *Windows User Magazine*, Middle East, March 1998
- Recommended Rating, *Computer Buyer*, United Kingdom, October 1997
- Best New Arabized Application, CorelDRAW™ 6 Arabic, *Byte Middle East*, Middle East, December 1996

- User's Choice for Best Product of the Year, Graphic Design and Illustration category, *PC Actual*, Spain, November 1996
- Corporate User Award for Best Product, Graphic Design category, *Prince & Cooke*, Argentina, October 1996
- 1996 Best Product of the Year, Graphic Design Software, *PC World Cerebro*, August 1996
- Product of the Year 1996, Graphic Design Software, *PC World Central America*, July 1996
- Product of the Year 1996, Graphic Design Software, *PC World Argentina*, Argentina, July 1996
- Product of the Year 1996, Graphic Design Software, *PC World Chile*, Chile, July 1996
- Product of the Year 1996, Graphic Design Software, *PC World Colombia*, Colombia, July 1996
- Product of the Year 1996, Graphic Design Software, *PC World Ecuador*, Ecuador, July 1996
- Product of the Year 1996, Graphic Design Software, *PC World Mexico*, Mexico, July 1996
- Product of the Year 1996, Graphic Design Software, *PC World Peru*, Peru, July 1996
- Product of the Year 1996, Graphic Design Software, *PC World Venezuela*, Venezuela, July 1996
- Recommended Product Award, *PC World*, Spain, May 1996
- Best Graphic Design Application, *Guia de Compra de Ordenadores*, Spain, April 1996
- Best Graphic Design Package, *PC World Spain*, Spain, April 1996
- Product of the Year 1996, *Czech Reprographic Society*, Czech Republic, April 1996
- Recommended Product Steal, *PC Actual*, Spain, March 1996
- Included in the 100 Best Software Products 1995 listing, *Windows Magazine*, Argentina, February 1996
- Product of the Year Award 1996, Graphics Software category, *PC World Turkey*, Turkey, 1996
- Voted 1996 Best Graphics Software in reader's poll, *PC World Hong Kong*, Hong Kong, 1996
- Product of the Year 1996, Best Graphics Software division, *CHIP Magazine*, Germany, 1996
- Reader's Choice Award, *Arabian Computer News*, 1996
- Best Localized Product, *Gitex (Middle East)*, Middle East, 1996
- Best Graphics Product 1996, *PC World New Zealand*, New Zealand, 1996
- PC Magazine Award for CorelDRAW™ 6 Italian, Graphics Category, *PC Magazine Italy*, Italy, 1996
- Best Product, *Byte Magazine Spain*, Spain, November 1995
- 1995 World Class Awards, *PC World Hong Kong*, Hong Kong, 1995

Where Do I Get More Information?

Corel Corporate Headquarters

1600 Carling Avenue

Ottawa, Ontario

CANADA

K1Z 8R7

Telephone: 613-728-8200

Fax: 613-728-9790

Web site: www.corel.com

For information about CorelDRAW 9, visit Corel's Web site at www.corel.com/products/draw9/main.htm.

For information about the World Design Contest, visit Corel's Web site at www.corel.com/contests/index.htm.

For information about the Corel's new community Web site for graphic designers, visit www.designer.com/.

For general public relations inquiries, contact Corel's media relations department at

Email: media@corel.ca

Telephone: (613) 728-8200 ext. 1801

For information about **Corel's Year 2000 Policy**, visit Corel's Web site at www.corel.com/2000.htm or email Year2000c@corel.ca.

Corel Local Offices

Country	Corporate Name	Address	Telephone and Fax Numbers
Australia	Corel International Corp.	Lvl 14 33 Berry Street, North Sydney NSW 2060, Australia	Tel: 612 9959 1902 Fax: 612 9959 1005
Brazil	Corel do Brasil Limitada	Ave. Dr. Chucri Zaidan, 92-9 floor Market Place Tower Bairro: Morumbi Cep: 04583-904 Sao Paulo- S.P., Brazil 04583-904	Tel: 55 11 3048 4119 Fax: 55 11 3048 4145
Colombia	Corel International Corp.	HQ Bogota Colombia Carrera 18 No. 86 A 14, Colombia	Tel: 571-296-0282 Fax: 571-296-0283
Denmark	Corel International Corp.	Regus House Larsbjørnstraede 3 1454 Kobenhavn., Denmark	Tel: 45 33 37 72 62 Fax: 45 33 37 72 63
England	Corel International Corp.	Slough Center 268 Bath Road Slough, Berks SL1 4DX, UK	Tel: 44 1753 708 406 Fax: 44 1753 708 839
Finland	Corel International Corp.	Metsäanneidonkuja 8 02130 ESPOO, Finland	Tel: 358 9 430 78 299 Fax: 358 9 430 78 297
France	Corel International Corp.	99 rue Pierre Sépard 92 324 Châtillon Cedex, France	Tel: 331 40 92 54 65 Fax: 331 40 92 54 60
Germany	Corel International Corp.	Zeppelinstr. 4 (Haus #4) 85399 Hallbergmoos, Deutschland	Tel: +49 (0) 811-8383-0 Fax: 49 811 8383 x10
Hong Kong	Corel International Corp.	15/F Radio City 505 Hennessy Road Causeway Bay, Hong Kong	Tel: 85 2 2836 7788 Fax: 85 2 2836 7000
Ireland	Corel Corporation Limited	Europa House Harcourt Street, Dublin 2, Ireland	Tel: 353 487 2855 Fax: 353 475 4295

Italy	Corel International Corp.	Corso Monteforte n54 20122 Milano, Italia	Tel: 39 02 77 399 303 Fax: 39 02 77 399 400
Mexico	Corel International Corp.	Galileo No. 13 Polanco 11560, Mexico D.F., Mexico	Tel: 525 280-2886 Fax: 525 280-8224
Netherlands	Corel International Corp.	Transpolis Schiphol Airport Polaris Avenue 53 2132 JH Hoofddorp, Nederland	Tel: 0206111611 Fax: 0205040564
New Zealand	Corel International Corp.	PO Box 6649 Wellsely Street Auckland, New Zealand	Tel: 64 9 358 7199 Fax: 64 9 358 7362
Norway	Corel International Corp.	Karenslyst alle 8B, 0277 Oslo, Norway	Tel: 47 23 12 06 10 Fax: 47 23 12 05 10
South Africa	Corel International Corp.	Street Address Regus Business Centre 2nd Floor West Tower Sandton Square, Sandown PO Box 785553, South Africa Mailing Address PO Box 785553 Sandtown, 2146 South Africa	Tel: 27 11 881 5446 Fax: 27 11 881 5546
Spain	Corel International Corp.	Parc Technologic del Valles 08290, Cerdanyola Barcelona, España	Tel: 34 93 582 4575 Fax: 34 93 582 4576
Sweden	Corel International Corp.	Frösundaviks Alle 15, 4tr 169 70 Solna Sverige	Tel: 46 8 655 2618 Fax: 46 8 655 2610
Switzerland	Corel International Corp.	Taefernstrasse 37 CH-5405 Baden, Schweiz	Tel: 41-56-4-84-18-18 Fax: 41 56 484 1819
USA	Corel International Corp.	First Union Financial 200 South Biscayne Blvd. Suite 1690 Miami, Florida, 33131, USA	Tel: 305-375-6000 Fax: 305-375-6001

Corel International Customer Service

Country	Telephone Number
Ireland	1-800-688400
Belgium	0800-72171
UK	0800-973189
Denmark	800-186-96
Finland	0800-1-13502
Luxemburg	0800-2213
Netherlands	0800-022-5061
Norway	800-11673
Portugal	0800-8-53-001
Spain	900-94-35-35
Sweden	020-791-097
Switzerland	0800-55-7845
Germany	0130-829-443
Austria	0660-5537
Italy	06-52362602
France	33 1 40 92 7615
Mexico	1-800-024-2673
Argentina	0800-333-9192
other countries	353-1-706-3916

For **premium technical service** inquiries

Telephone: 353 17082580

Fax: 353 14753106

Email: Dub-Premium@Corel.ie